

APPENDIX 1

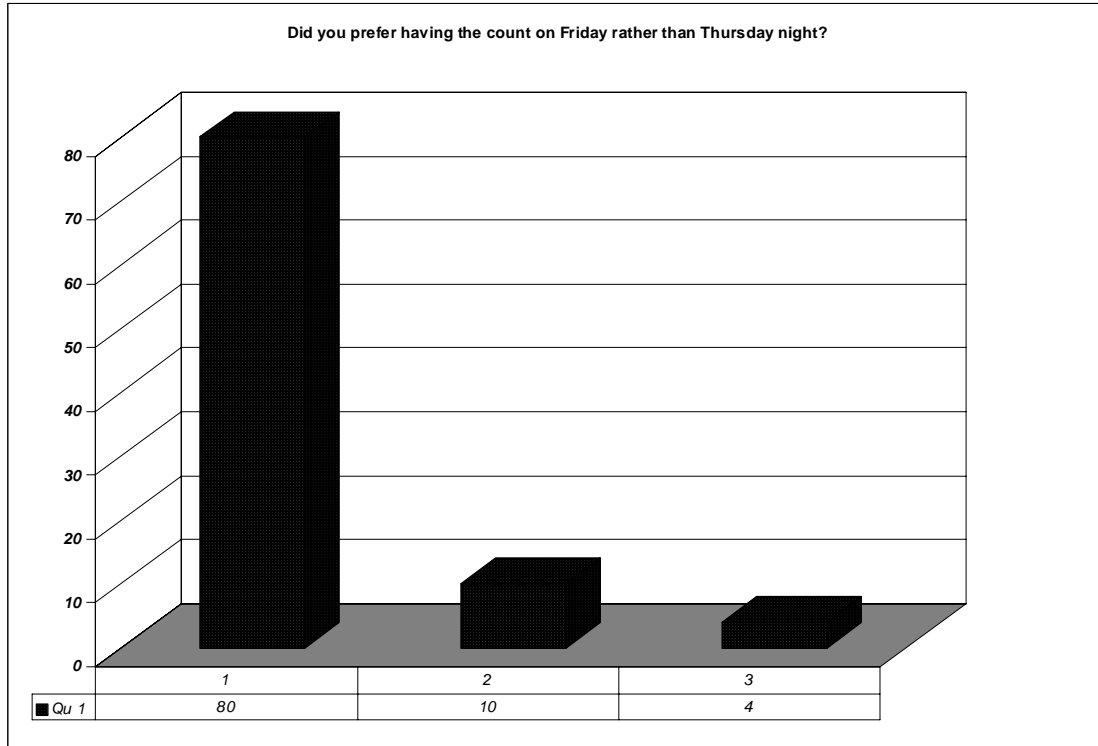
STAFF SURVEY – THURSDAY OR FRIDAY COUNTS?

		YES	NO
1	If you worked at the elections this year or last year, did you prefer having the count on the Friday rather than the Thursday night? If you answered “yes”, please tell us why in the space below.		
2	If we hold the count on a Thursday night straight after polling starting at 10pm, would you volunteer to help?		
	If you ONLY volunteer to count, that’s it, no more questions to answer, thank you very much. If you volunteer to help on polling day as well please answer questions 3 - 7		
3	Having worked all day on the polling station (15 hours), would you still volunteer for the count if it was held on the Thursday night?		
4	Having worked all day on the polling station, would you be more inclined to volunteer if the count is on the Friday?		
5	If the count was held on a Thursday and we were required to have separate staff for polling station duties and the count, which would you volunteer to do: Polling station Count		
6	If we keep the count on Friday, would you still be prepared to work on both days?		
7	Finally, to recap which of the following scenarios would prefer?		
	Polling 7am-10pm Thursday/count Friday		

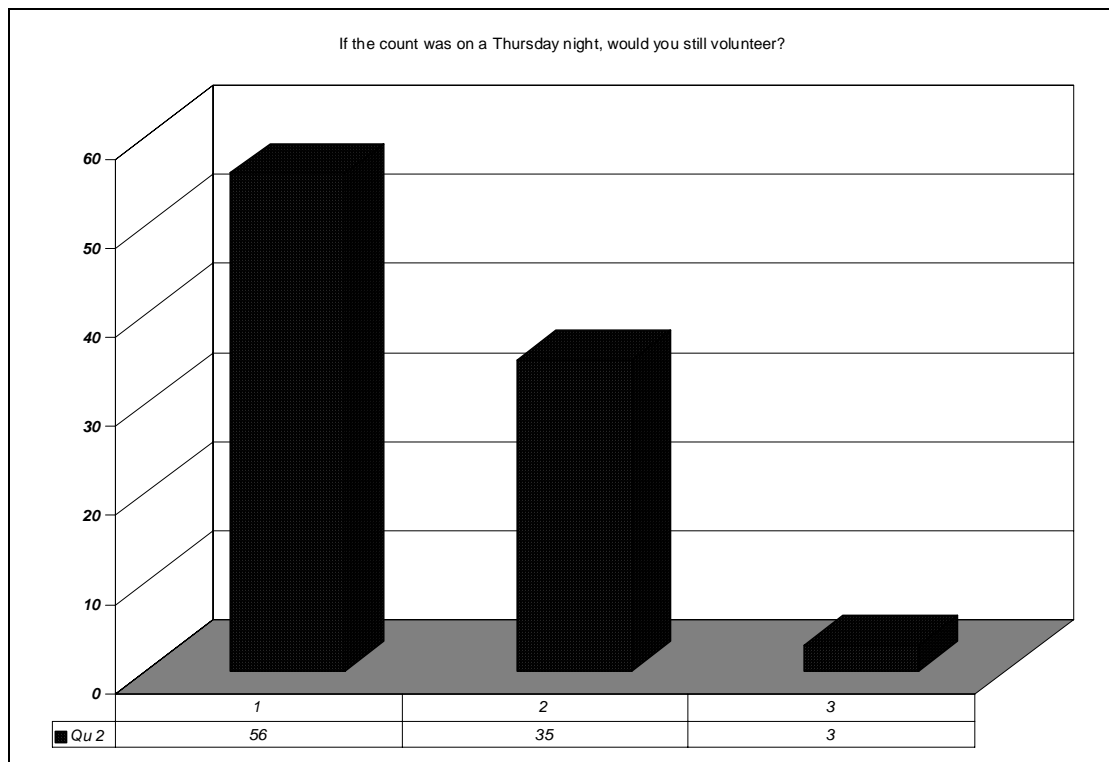
	Polling 7am-10pm Thursday/count Thursday night		
--	---	--	--

Thank you for your help.

APPENDIX 2

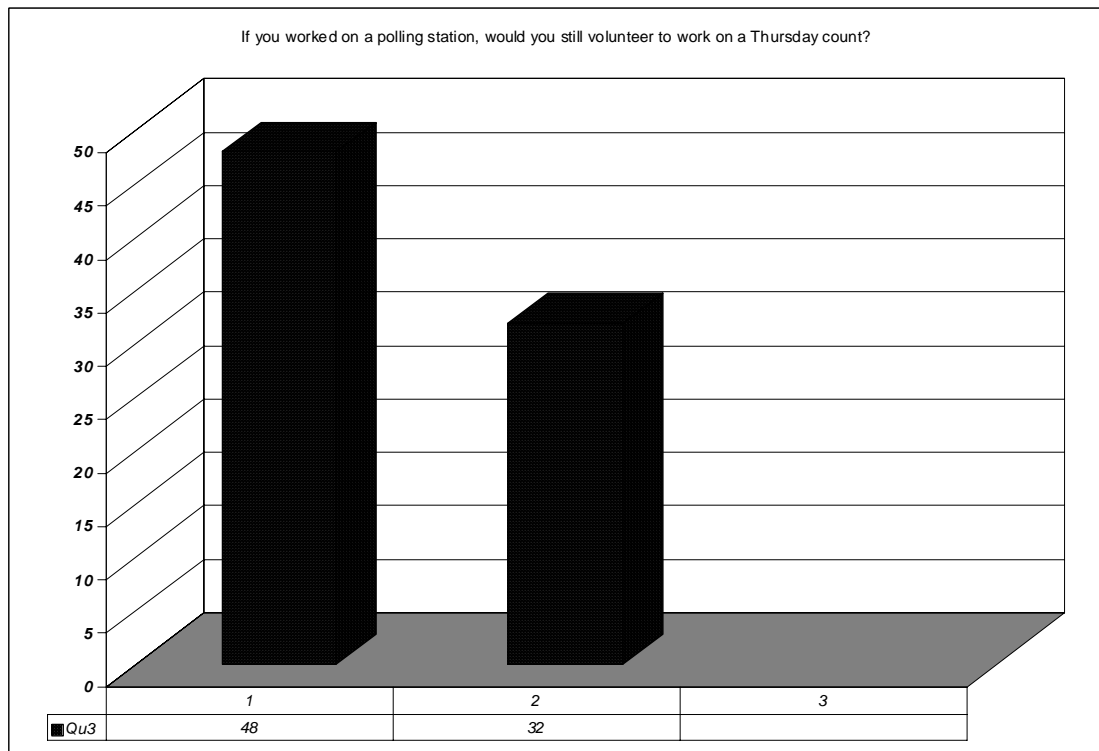


There was overwhelming support for holding the count on a Friday.

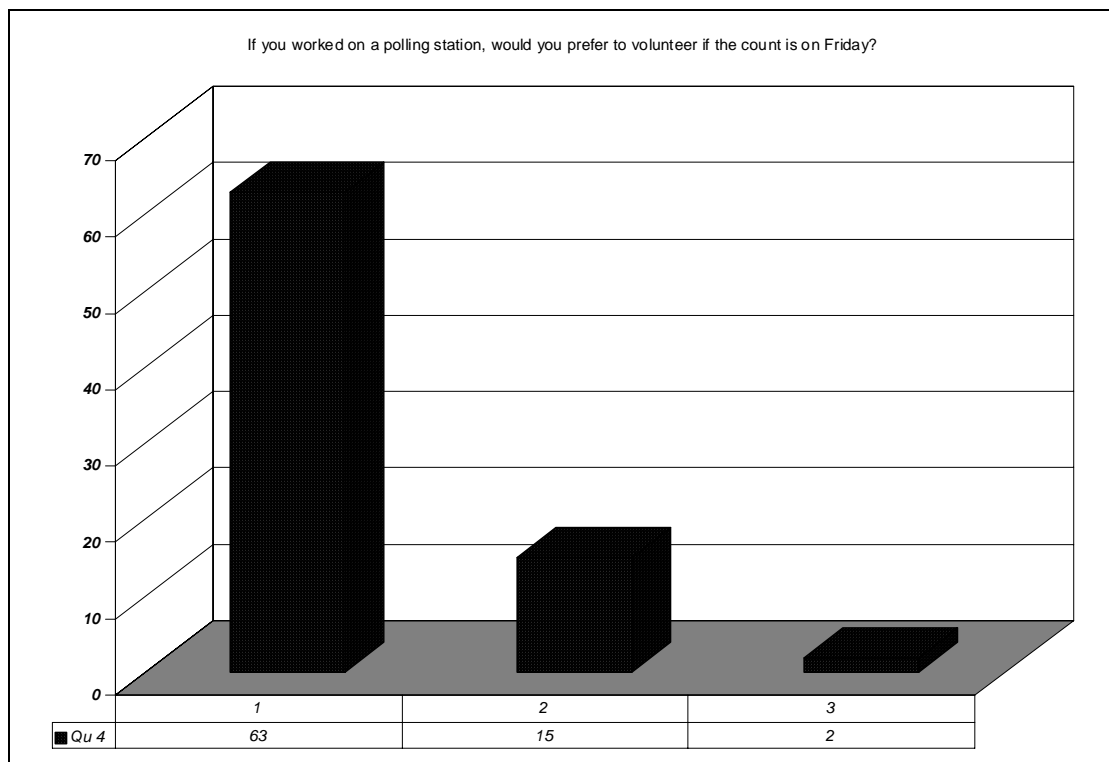


This graph shows that 35 people who counted on a Friday, would not volunteer to count on a Thursday night. That's nearly half of volunteers. All of the people who volunteered to count were given appointments and so it would prove difficult to fill all the places available if the count were held on a Thursday. Several people indicated that they answered "yes" to the question because they were worried that, if they answered "no", it would, in some way, affect their chances of being appointed in the future. If the decision was made

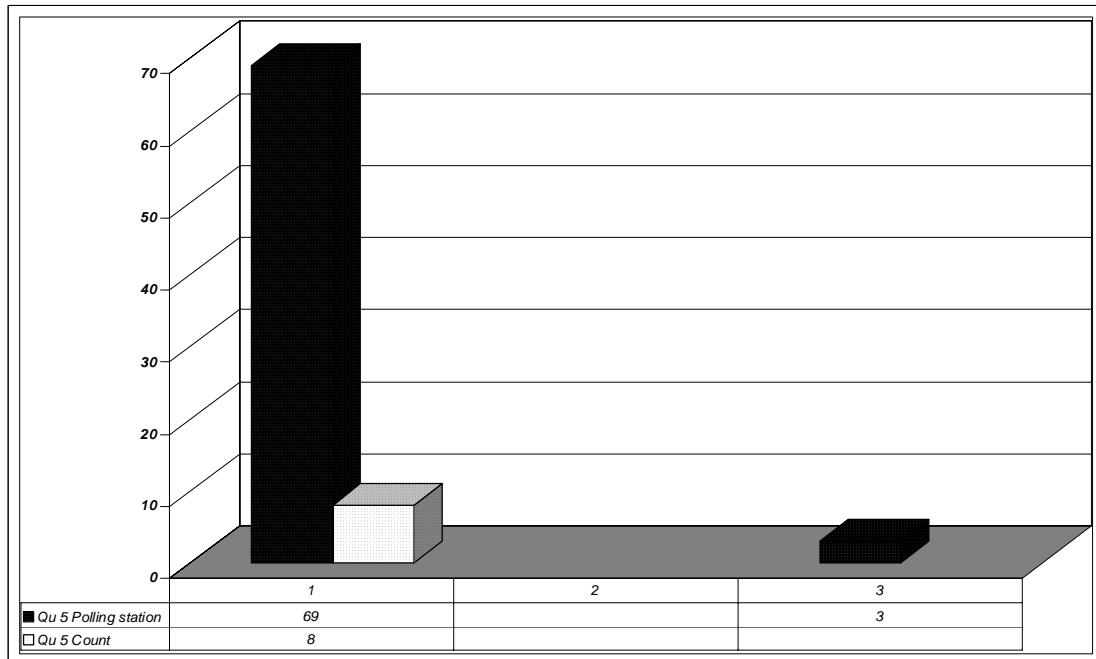
to count on a Thursday, it may be that even more people decide not to volunteer than the graph shows.



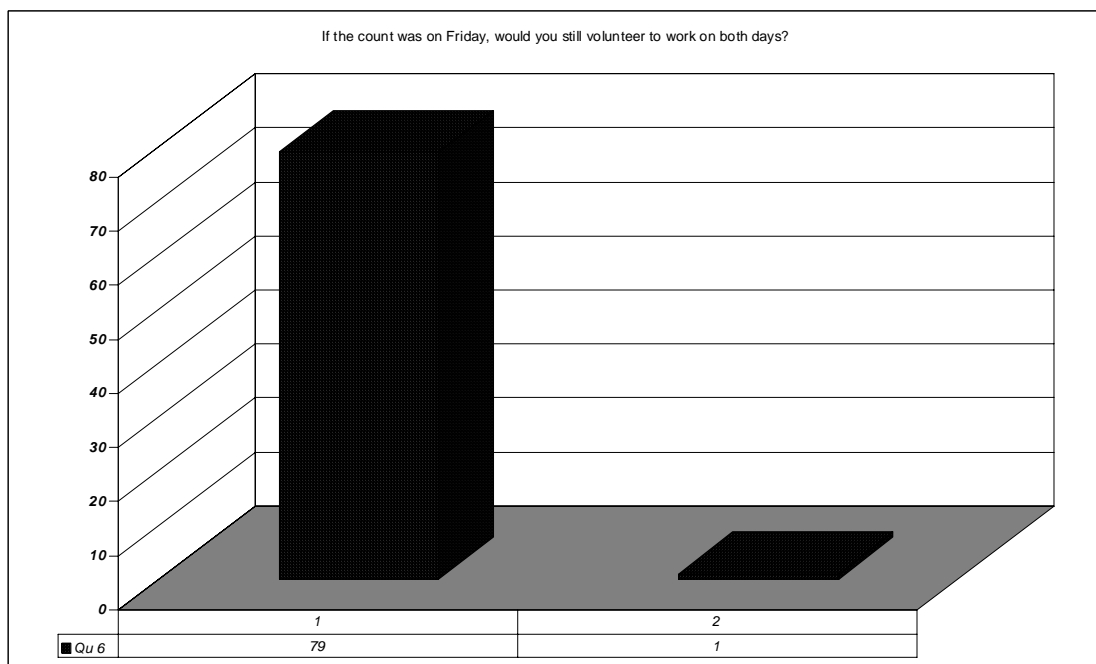
The graph reiterates question 2 but this was restricted to those who worked on polling day too. It would be extremely worrying to “lose” so many count volunteers just because of the timing of the count.



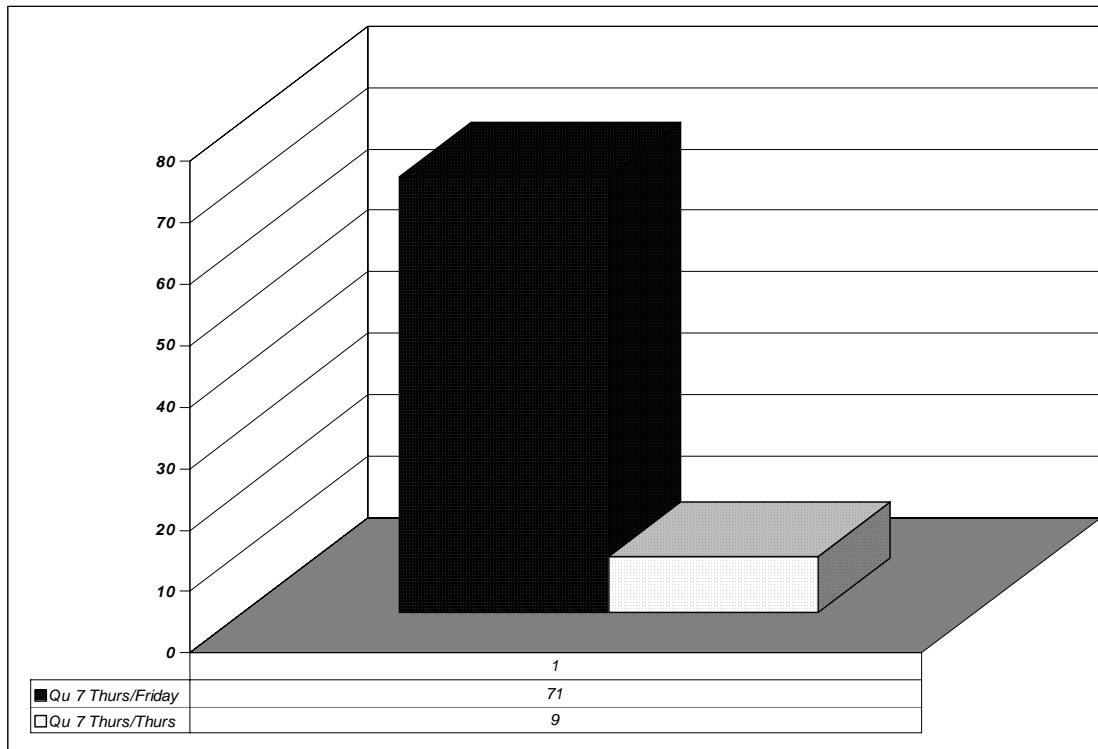
This graph is a better reflection of staff feeling. Those that said “no” had varying reasons – e.g. could not take extra time off work, preferred to do everything on the one day, two long days was too much so wouldn't volunteer for both again.



Staff were asked to decide if there were separate staff for polling duties and the count, which would they choose. It is very clear what their preference is although many said they would be upset if such a strategy was implemented as they like doing both parts of the process. Comments ranged from “poll clerk/presiding officer pays more so I would choose that”, “we can work during the day then go home to bed” to “my husband can look after the kids while I do the count”. 3 people indicated they didn't have a preference.



Only one person indicated they would not volunteer to work on both days if the count remained on the Friday giving an overwhelming endorsement from staff of the Returning Officer's policy.



The scenario of polling on Thursday and counting on Friday was the definite choice of the staff polled.